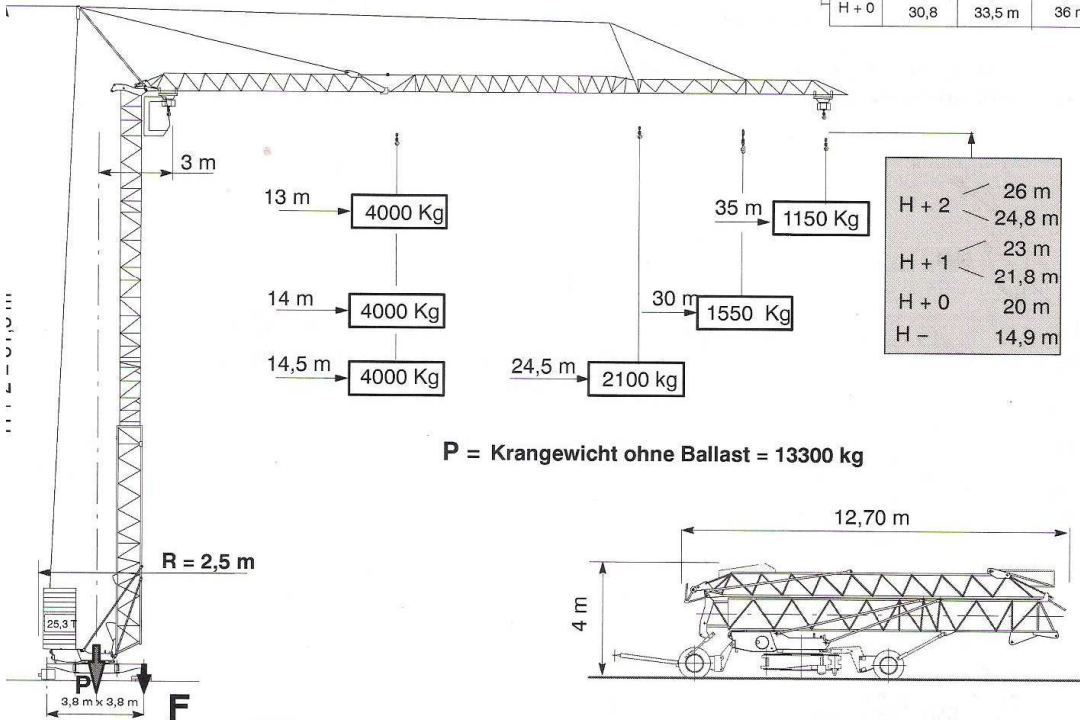
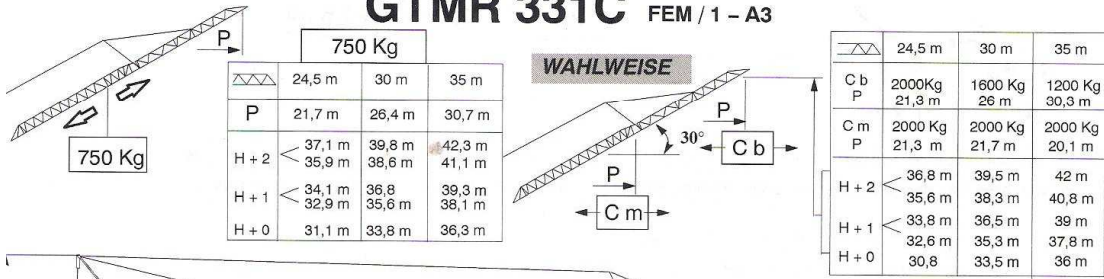


1. DATENBLATT

GTMR 331C FEM / 1 - A3



		bd		b8d		
		MV = 8,3 m/m	2000 Kg	MV = 4,15 m/mn	4000 Kg	
PV = 25 m / mn	2000 Kg	PV = 12,5 m / mn	4000 Kg			
GV = 50 m / mn	1200 Kg	GV = 25 m / mn	2400 Kg			
	3 D2V4	22 - 44 m / mn				3 kW
	RCV 22	0 -----> 0,8 tr / mn				2,2 kW
	TVD122	25 m / mn				2 x 1,5 kW
		400V (+ 6% - 10%) - 50Hz = 20 KVA				

