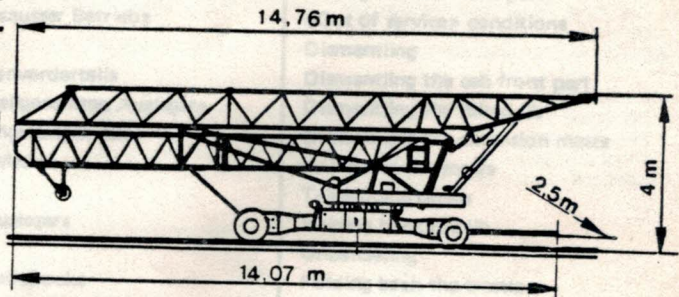
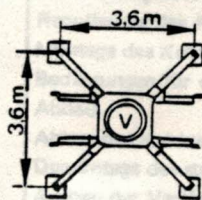
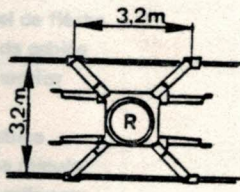
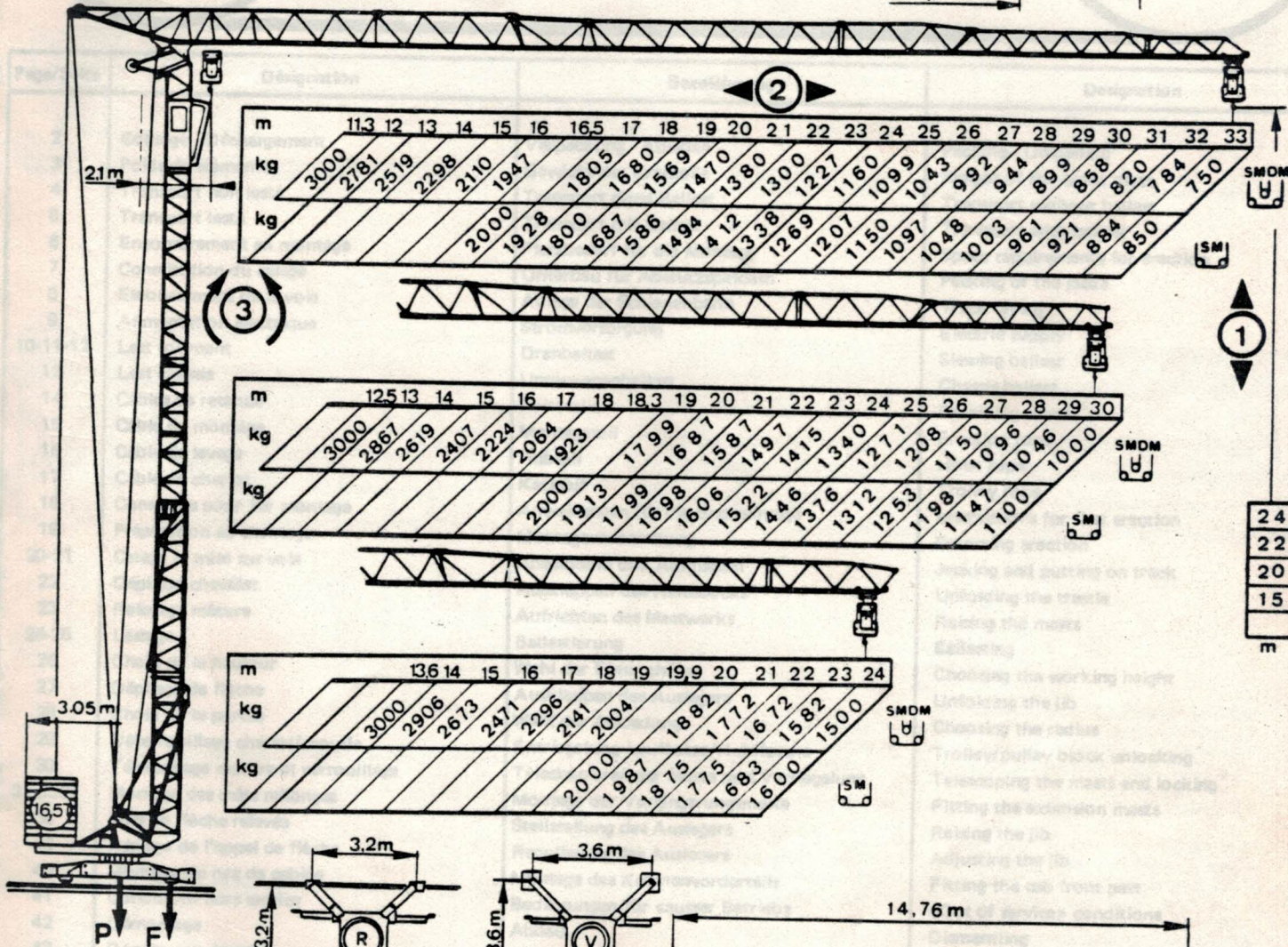
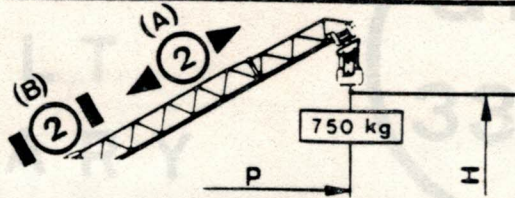


	24 m	30 m	33 m
P=	20.8m	26 m	28.6m
24 m	H= 34.9m	37.9m	39.4m
22 m	H= 32.9m	35.9m	37.4 m
20 m	H= 30.9m	33.9m	35.4 m



P=13600 kg
 SANS LEAST SANS TRAIN
 OHNE BALLAST OHNE TRANSPORTACHSE
 WITHOUT BALLAST WITHOUT TOWING AXLE
 SIN LASTRE SIN TREN

F_V=16860 daN EN SERVICE IN SERVICE
F_R=19500 daN IN BETRIEB EN SERVICIO
F_V=12700 daN HORS SERVICE OUT OF SERVICE
F_R=14050 daN AUSSER BETRIEB FUERA DE SERVICIO

50Hz		60Hz		m/mn	kg	kW	m/mn		kg	kW	(A)= 2D1V2		(B)= 2D2V2		
15 TDPC 10				4,2	3000	3,7	8,4	2000	3,7	4,4	14 - 42 m/mn	35 m/mn	3 kW	42 m/mn	3.6 kW
				5	4,4	16.6 - 50 m/mn						2,2 kW	2,6 kW		
				8,4	1500	3,7	10	4,4	0,16 - 0,5 - 1 tr/mn	2,2 kW	2,2 kW				
				10	4,4	25 m/mn			2x1,5 kW	26 kW					
				12,5	3000	11	25	2000	11	30 m/mn	2x1,8 kW	380V - 50Hz = 20KVA		450V 60Hz = 24 KVA	
				15	13,2	50									1000
				25	1500	11	30	13,2	50	1000	11				
				30	13,2	60						13,2			